



Training and Technical Assistance Directory

TABLE OF CONTENTS

<u>Section</u>	<u>Page</u>
Introduction	3
Aligned Impact Consulting Services	4
Amy Salinas	5
Bee's Knees Consulting LLC	6
Buffalo Creek Consulting	7
Chany Reon Ockert Consulting LLC	8
Do Good, Be Good	9
EagleChild Consulting & Enforcement Services	10
Elkins Consulting Inc.	11
EmpowerMT	12
The Grantsmanship Center	13
Halliday & Associates	14
Hart of Montana Consulting, Inc.	15
Jefts Consulting	16
LaNette Jones	17
KS Solutions, LLC	18
McMahon Consulting Group, LLC	19
Montana Natural History Center	20
Montana State University Extension	21
MSU Political Science & Extension/Community Development	22
NDH Consulting	23
On3Learn, LLC	24
Pamela G. Poon, PLLC	25
PLuck! Coaching	26
Racine Enterprises LLC	27
Reacher Higher Montana	28
The Service Nerd	29
Service Year Alliance	30
Thomas P. Miller & Associates	31
University of Montana	32
Verve Exchange	33
Volunteer Pro	34
VQ Volunteer Strategies	35
Wordcraft LLC	36
Yarrow House	37
Training Topic Chart	38-44

Introduction

The Governor's Office of Community Service's (OCS) Training and Technical Assistance Directory is a resource for Montana AmeriCorps State & National and AmeriCorps VISTA program staff to connect with trainers and consultants who are peer recommended, and demonstrated support for the state service commission network, nonprofit organizations and AmeriCorps programs.

These consultants have demonstrated areas of expertise and commitment to local, state and national service programs. Inclusion in the OCS Training and Technical Assistance Directory requires the completion of an application including references.

The Training and Technical Assistance Directory serves to find professionals who understand the importance of the AmeriCorps program, state service commission network and have references recommending them on their areas of expertise.

AmeriCorps programs place dedicated individuals in communities across the state to address local needs and develop contributors. To learn about AmeriCorps programs in Montana visit: <http://serve.mt.gov/AmeriCorps/americorp-in-montana>

To request information or an alternate format of the Training and Technical Assistance Directory or assistance finding a qualified trainer or consultant, please contact OCS at: serve@mt.gov

OCS acknowledges our many partners and appreciates the diverse, nationwide respondents. As we proceed with implementing the OCS Training Directory, we do not endorse any training provider over another, each program must exercise due diligence to ensure that the selected provider is the best fit for the desired outcomes.

ALIGNED IMPACT CONSULTING SERVICES



Brent Kossick, Founder of Aligned Impact Consulting Services, has over ten years of experience in national service and nonprofit programming that has included serving as the former Director of the South Carolina Service Commission and National AmeriCorps Director for SBP Inc. He is passionate about talent acquisition and development, and enjoys assisting in the sourcing, training, and ongoing development of both program and commission staff. Brent is well-versed in most components of Commission and AmeriCorps program operations and enjoys providing both one-on-one consultation as well as facilitating trainings, meetings, and events.

Training Topics:

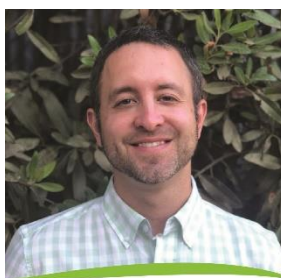
AmeriCorps Grant Management	Meeting Facilitation
AmeriCorps Program Management	Member Development
Civic Engagement	Member Orientation & Training
Disaster Services	Member Recruitment & Retention
Diversity & Disability Inclusion	Multi-Site Management
Grant Proposal Writing, Editing, Feedback & Review	Program Development
Grantmaking	Program Management & Training
Leadership Development	State Service Commission Operations
Life After AmeriCorps	Theory of Change
Logic Models	Train the Trainer/Facilitation Skills
Marketing & Communications	

References:

Carson Carroll	South Carolina Service Commission	(803) 6089143	Carson.Carroll@uwasc.org
Angela Pinckard-Hale	SBP Inc.	(504) 635-9333	apinckard-hale@sbpusa.org

Contact:

Brent Kossick
116 Beth Hope Ln.
Columbia, SC 29210
E: brent.kossick@AlignedImpactcs.com
Ph: (803) 470-2025



AMY SALINAS



Amy Salinas has spent the last 24 years working in the fields of national service, volunteerism, community development, and youth development and leadership. Twenty of those years have been specifically within national service. Within national service, Amy began as an AmeriCorps Member where she served in Arlington, Texas, worked for an AmeriCorps State program and for the Texas Commission on Volunteerism and Community Service (Texas State Service Commission at that time) as a Program Officer, Training Specialist, and Disability Inclusion Specialist. For the last 10 years, Amy has worked as a consultant within the national service family. As a consultant, Amy has planned and implemented many state, regional, and national conferences including 6 National Financial and Grants Management Institutes that supported all national service programs including AmeriCorps and Senior Corps grantees. Additionally, she has delivered training sessions, facilitated large group opportunities, and delivered content in round robin formats at local, state, regional, and national trainings. This included many of the past Regional Training Events from 2010-2019. Amy is a national VISTA trainer and provides training and coaching to AmeriCorps programs throughout the country.

Training Topics:

AmeriCorps Program Management	Member Orientation & Training
Capacity Building	Member Recruitment & Retention
Civic Engagement	Multi-Site Management
Data Collection and Instruments	Performance/Impact Measurement
Diversity & Disability Inclusion	Program Development
Grant Proposal Writing, Editing, Feedback & Review	Program Management & Training
Leadership Development	Strategic Planning
Life After AmeriCorps	Site Supervisor Training
Logic Models	Theory of Change
Meeting Facilitation	Train the Trainer/Facilitation Skills
Member Development	Volunteer Management

References:

Amy Roff	Oklahoma AmeriCorps	405.858.7278	aroff@okamericorps.com
Megan Foresman	Michigan Community Service Commission	(517) 512-4506	foresmanm@michigan.gov

Contact:

Amy Salinas
5106 Suburban Drive
Austin, TX 78745
E: CACconsulting@hotmail.com
Ph: (512) 294-3370

BEE'S KNEES CONSULTING LLC



Bee's Knees Consulting LLC

Gretchen is a developmental psychologist and program evaluator with over 25 years of research, evaluation, and teaching experience across multiple settings and countries. She provides program evaluation and related services to a range of non-profits and foundations. This work includes internal evaluation capacity-building, logic models, qualitative and quantitative measurement tools, performance measurement, evaluation planning, data analyses and usage, training, and communication of findings and evidence-building. Since January 2016, she has been Evaluation Consultant to the Massachusetts Service Alliance (MSA), providing technical assistance and training to over 25 AmeriCorps grantees in the state, and working closely with MSA program officers. She served for over 7 years as the Vice President of Evaluation at City Year, leading their national evaluation work across nearly 300 schools, reaching more than 150,000 students annually. Within the past two years, she has taught workshops at multiple America's Service Commissions Regional Conferences and at Points of Light and engaged in the evaluation of an AmeriCorps program in WA.

Training Topics:

Data Collection and Instruments	Performance/Impact Measurement
Designing an Evaluation	Program Evaluation
Developing Research Questions	Reporting and Using Evaluation Results
Evidence Base	Theory of Change
Logic Models	Writing an Evaluation Plan

References:

Lisl Hacker	Massachusetts Service Alliance	(617) 542-2544 ext. 205	lhacker@mass-service.org
Amy Copperman	AmeriCorps Legal Advocates of Massachusetts	(508) 638-0150	acopperman@justicema.org

Contact:

Gretchen Biesecker, Ph.D.
31 Union Square
Somerville, MA 02143
E: gbieseck@gmail.com
Ph: (617) 899-0780
www.beeskneesdata.com



BUFFALO CREEK CONSULTING



Buffalo Creek Consulting

Buffalo Creek Consulting provides extensive training, development, coaching, and facilitation for individuals, teams and organizations. We operate from the fundamental belief that most people genuinely want to do the best job they can and deliver the greatest value possible. We focus on removing the barriers that impede individual potential and creating enabling organizations to create a culture in which success can thrive. We have experience in federal, state, private, academic, and non-profit sectors. We tailor our design to best meet the needs of your organization.

We specialize in detailed organization assessment and design, team dynamics and performance, developing leadership capacity and facilitation of strategic planning and public comment sessions. Grounded in proven theory, we deliver innovative solutions and practical results.

Training Topics:

Board Development & Engagement	Member Recruitment & Retention
Capacity Building	Program Development
Designing an Evaluation	Strategic Planning
Developing Research Questions	Theory of Change
Leadership Development	Train the Trainer/Facilitation Skills
Meeting Facilitation	Volunteer Management
Member Development	Writing an Evaluation Plan
Member Orientation & Training	

References:

Kelly Cresswell	Reach Higher Montana	(406) 422-1275 ext 804	kcresswell@reachhighermontana.org
Mary Lannert	Helena College	(406) 447-6944	Mary.Lannert@HelenaCollege.edu

Contact:

Martha C Kesler
432 Last Chance Gulch, Suite E
Helena, MT 59601
E: martha@buffalocreekconsulting.com
Ph: (406) 933-5345



CHANY REON OCKERT CONSULTING, LLC



Chany Ockert, CFRE, assists nonprofits transition their vision into reality through fund development consulting and customized, targeted implementation. She has worked in the nonprofit sector across various fields after graduating in 2000 from Carroll College in Helena, Montana, with a Bachelor of Arts degree. She started her practice in 2007 and specializes in adapting the fundraising best practices and lessons across sub-sectors of nonprofits. In September 2016, she was awarded the Certified Fund Raising Executive (CFRE) designation based on demonstrated, measurable success in fundraising. She serves as a CASA volunteer and a member of the Bigfork Land Use Advisory Committee.

Training Topics:

Philanthropic & Sustainable Funding Sources	Resource Development
---	----------------------

References: *Available upon request; contact Chany Ockert below.*

Contact:

Chany Ockert, CFRE
P O Box 2063
Bigfork, MT 59911
E: chany@servingnonprofits.com
Ph: (406) 260-3221



DO GOOD BE GOOD



As an AmeriCorps alumna and former Project Director, VISTA program sponsor, and NCCC Team sponsor, Sharon Tewksbury-Bloom of Do Good, Be Good, brings extensive experience to training and technical assistance for National Service Programs and Commissions. As an organizational consultant Sharon assists leaders have more productive staff meetings and improve staff relationships. Sharon works with public service agencies to design leadership retreats and strategic plans. She is

experienced in developing and delivering workshops, and webinars for AmeriCorps State and National Programs and Commission staff. Sharon has provided consulting services and technical assistance to public service agencies such as the Arizona Supreme Court, City of Flagstaff Arizona, City of Fountain Colorado, Community Health Center Association of Connecticut, Delta Corps, Maryland Governor's Office on Service and Volunteerism, New York State Commission on National and Community Service, North Carolina Commission on Volunteerism and Community Service, and Northern Arizona University. Sharon has presented workshops at the National Conference on Volunteering and Service, National Service Regional Trainings, Financial and Grants Management Institute, and more.

Training Topics:

AmeriCorps Program Management	Multi-Site Management
Leadership Development	Program Management & Training
Life After AmeriCorps	Strategic Planning
Meeting Facilitation	Site Supervisor Training
Member Development	Train the Trainer/Facilitation Skills
Member Orientation & Training	Volunteer Management
Member Recruitment & Retention	

References:

Jennifer Flannery, MPS Program Specialist	Arizona Supreme Court AmeriCorps	(602) 452-3177	jflannery@courts.az.gov
Angela Pinckard-Hale, AmeriCorps National HR Director	SBP	(504) 635-9333	apinckard-hale@sbpusa.org

Contact:

Sharon Tewksbury-Bloom
3224 N Grandview Drive
Flagstaff, AZ 86004

E: connect@sharonspeaks.com

Ph: (928) 224-0504

www.sharonspeaks.com



EAGLECHILD CONSULTING



YoungBill Eaglechild RunningFisher has 16 years of experience in training and consulting. He is currently working with the Fort Belknap Indian tribes providing training and support for disaster preparedness and self-defense training in support of tribal health domestic violence program.

Training Topics:

Civic Engagement	Program Management & Training
Disaster Services	Service Enterprise Training/Consulting
Grant Proposal Writing, Editing, Feedback & Review	Site Supervisor Training
Member Development	Train the Trainer/Facilitation Skills
Member Orientation & Training	Volunteer Management
Member Recruitment & Retention	Writing an Evaluation Plan
Multi-Site Management	

References:

Ron Speakthunder	Fort Belknap Tribal Procurement Officer	(406) 390-5274	speakthunder_rg@yahoo.com
Jeff Stiffarm	Fort Belknap Tribal Councilman	(406) 390-6505	jeffery.stiffarm@ftbelknap.org

Contact:

YoungBill E RunningFisher
P.O. Box 412
Hays, MT 59527
E: eaglechildconsulting@gmail.com
Ph: (406) 899-8908
www.eaglechildconsulting.com

ELKINS CONSULTING, INC



Sarah provides keynotes, workshops, facilitation, individual, and team communication coaching. Topics such as Storytelling for Advocacy, Uncovering Your Strengths and Coaching Others, Stepping Out of Your Comfort Zone, The Power of Networking, and more. We use the Gallup StrengthFinders assessment as the functional backbone of self-reflection, improving communication by better understanding our own filters and biases.

Training Topics:

Leadership Development	Meeting Facilitation
Life After AmeriCorps	

References:

Eric Trum	Montana Watershed Coordination Council	406-444-0531	ETrum@mt.gov
Erin Shaw	Montana College Access Network	406-360-9781	mtcollegeaccess@gmail.com

Contact:

Sarah Elkins
432 Harrison Ave
Helena, MT 59601
E: sarahelkins@elkinsconsulting.com
Ph: (406) 431-0355
www.elkinsconsulting.com



EMPOWER MT



EmpowerMT has been providing youth, communities, businesses and organizations with diversity, equity and inclusion training and facilitation for 20 years across the state of Montana. We also provide facilitation services, strategic planning services, and consultation services. **EmpowerMT** offers mediation services, conflict resolution skill building workshops and classes and reconciliation services.

Training Topics:

Board Development & Engagement	Member Orientation & Training
Diversity & Disability Inclusion	Program Management & Training
Leadership Development	Strategic Planning
Meeting Facilitation	Train the Trainer/Facilitation Skills
Member Development	

References:

Cindy Weese	Missoula YWCA	(406) 543-6777	cweese@ywcaofmissoula.org
Michelle Halley	City of Missoula HR Dept		halley@ci.missoula.mt.us

Contact:

EmpowerMT
2300 Regent, Suite 101
Missoula, MT 59801
E: info@empowermt.org
Ph: (406) 541-6891

THE GRANTSMANSHIP CENTER



With more than 140,000 alumni, including many AmeriCorps staff and volunteers, The Grantsmanship Center delivers cutting-edge grants training, both in-person and online, for state service commissions, national service, volunteer programs, state agencies, nonprofits, Native American groups, and academic institutions. Special rates for AmeriCorps/VISTA.

Having created the world's most-used, beloved, and effective format for successful grant proposals, The Grantsmanship Center trains leaders in how to plan powerful programs and get the funding to run them. Nearly fifty years of training excellence is documented by third-party evaluations which attest to the quality and enduring benefit of The Grantsmanship Center training.

The Center's textbook, *Grantsmanship: Program Planning & Proposal Writing*, is described as "indispensable" and "rocket fuel for great program planning and proposal writing." Available on the Center's website and Amazon.com. www.tgci.com has many articles and resources, both for free and for a fee, on range of topics related to grants.

Training Topics:

AmeriCorps Grant Management	Program Development
AmeriCorps Program Management	Program Evaluation
Capacity Building	Program Evaluation Budget
Designing an Evaluation	Program Management & Training
Grant Proposal Writing, Editing, Feedback & Review	Reporting and Using Evaluation Results
Grantmaking	Theory of Change
Logic Models	Writing an Evaluation Plan
Philanthropic & Sustainable Funding Sources	

References:

Carol Murray	Blackfeet Community College	(406) 623-0980	c_murray@bfcc.edu
Michele Casella	NSF EPSCoR Education, Outreach & Diversity Nevada System of Higher Education - Sponsored Programs	(702) 522-7076	mcasella@nshe.nevada.edu

Contact:

Cathleen Kiritz
350 S. Bixel St.
Los Angeles, CA 90017
E: info@tgci.com
Ph: (213) 482-9860

HALLIDAY & ASSOCIATES



Deb Halliday is a master facilitator and community builder who brings over 25 years' experience working with communities to tackle the complex issues of education, health care, and the economy through collaborative partnerships and strategic design. She provides training and coaching on Collective Impact, collaboration, and community change. Recent clients include Montana Office of Commissioner of Higher Education, Headwaters Foundation, Dennis & Phyllis Washington Foundation, Montana State University – Office of Rural Health, and the Wyoming Coalition Against Domestic Violence & Sexual Assault.

Training Topics:

Board Development & Engagement	Meeting Facilitation
Capacity Building	Program Development
Civic Engagement	Public Policy/Advocacy Education
Grant Proposal Writing, Editing, Feedback & Review	Strategic Planning
Grantmaking	Train the Trainer/Facilitation Skills
Leadership Development	

References:

Liz Moore	Montana Nonprofit Association	406-449-3717	mna@mtnonprofit.org
Mike Halligan	Dennis & Phyllis Washington Foundation	(406) 728-5118	

Contact:

Deb Halliday
432 N Last Chance Gulch Ste L
Helena, MT 59601
E: deb@debhalliday.com
Ph: (406) 546-6991



HART OF MONTANA CONSULTING, INC

As an independent consultant, Kelly primarily focuses on supporting State government, tribal programs, non-profits, and other organizations through program evaluations, data analysis, data visualization, needs assessments, research, and technical writing. She takes a collaborative approach to projects and has experience working on a variety of issues including teen parenting and pregnancy, substance abuse prevention, domestic violence and sexual assault, agriculture, poverty, and early childhood.

She is a two-time AmeriCorps alum, serving as a VISTA with Montana Legal Services Association in 2004 and as a State Team Leader with the Oregon Department of Human Services in 2005. Kelly recently volunteered on the Office of Community Service Grant Review Workgroup and shared knowledge about data at the 2019 Serve Symposium. She lives in the community of Albertain and serves on the board of the PEAK (Promoting Excellence in Albertain-area Kids) Foundation.

Training Topics:

Capacity Building	Performance/Impact Measurement
Data Collection and Instruments	Program Development
Designing an Evaluation	Program Evaluation
Developing Research Questions	Program Evaluation Budget
Grant Proposal Writing, Editing, Feedback & Review	Program Management & Training
Life After AmeriCorps	Reporting and Using Evaluation Results
Logic Models	Writing an Evaluation Plan

References:

Rachel Gooen	5th House Consulting	(406) 360-7685	rachel@5thhouseconsulting.com
Erin Switalski	Headwaters Foundation	(406) 218-2431	erins@headwatersmt.org

Contact:

Kelly Hart
PO Box 7412
Missoula, MT 59807
E: kelly@hartofmontana.com
Ph: (406) 830-0775
www.hartofmontana.com



JEFTS CONSULTING

Jennifer Cowart has been involved with AmeriCorps for over 16 years. She served as an AmeriCorps member for two years and was the Director of two Texas-based AmeriCorps programs that each had 100 members. She began full-time consulting in 2016 and has extensive experience coaching and training AmeriCorps grantees in compliance and high-quality program elements. She supports them in developing systems, documents and processes to ensure a foundation of AmeriCorps success. Jennifer has worked with numerous state commissions and their AmeriCorps programs including, but not limited to, Arizona, Michigan, New Mexico, North Carolina, Oklahoma, and Texas. She has provided a range of training and technical assistance for these state commissions and programs including individualized program coaching, grant writing, grant and program management, and member and site management to name a few. Jennifer has also presented at many state, regional, and national conferences and delivered web-based trainings on various AmeriCorps-specific topics.

Training Topics:

AmeriCorps Grant Management	Member Orientation & Training
AmeriCorps Program Management	Member Recruitment & Retention
Diversity & Disability Inclusion	Multi-Site Management
Civic Engagement	Performance/Impact Measurement
Grant Proposal Writing, Editing, Feedback & Review	Program Development
Life After AmeriCorps	Program Management & Training
Member Development	Site Supervisor Training

References:

Melinda Points, Executive Director	Oklahoma AmeriCorps	(405) 858-7278	mpoints@okamericorps.com
Megan Foresman, Program Officer	Michigan Community Service Commission	(517) 512-4506	foresmanm@michigan.gov

Contact:

Jennifer Cowart
1821 Ralph Cox Road
Austin, TX 78748
E: jeftsconsulting@gmail.com
Ph: (956) 827-5298



KS SOLUTIONS



Kate has operated a consulting practice for nonprofit and government agencies full-time since 2011. Her clients have included volunteer centers, state commissions, various large volunteer projects, a host of nonprofits, universities and more. Her work focuses on providing support, solutions and strategies through strategic planning, stakeholder

engagement, facilitation, professional development, and project management. Prior to consulting, Kate was a staff member of Maryland's service commission, the Governor's Office on Service and Volunteerism. Kate worked with many National Service programs, community and business leaders. She is familiar with the work of state commissions and as a consultant has provided training and facilitation to two other state commissions in PA and AR. She also was the director of a volunteer center at Business Volunteers Maryland for 6 years and has subsequently worked with them in a consulting role for another 4 years offering training, technical assistance and management consulting. Her work experience combined with consulting expertise offers a professional yet, open and people-centered approach with real life work experiences to pull from when working with clients. Kate's bio here:

<https://www.kssolution.com/k-scherr-adams-bio.html>

Training Topics:

Board Development & Engagement	Member Recruitment & Retention
Capacity Building	Multi-Site Management
Civic Engagement	Program Development
Leadership Development	Program Management & Training
Life After AmeriCorps	Strategic Planning
Meeting Facilitation	Train the Trainer/Facilitation Skills
Member Development	Volunteer Management
Member Orientation & Training	

References:

Maureen Eccleston	PennServe	(717) 772-4428	meccleston@pa.gov
Shana Chaplin	VolunteerAR	(501) 320-6459	shana.chaplin@dhs.arkansas.gov



Contact:

Kate Scherr-Adams
5213 Biddison Lane
Baltimore, MD 21206
E: kscherr@kssolution.com
Ph: (410) 707-8807
www.kssolution.com

LANETTE JONES

LaNette was an AmeriCorps VISTA with the Prevention Resource Center from 2000-2002. She was a trainer for OCS (from 2002-2007), the Community Building Institute, and Trainer Toolbox (train the trainer).

Training Topics:

Board Development & Engagement	Member Development
Capacity Building	Member Orientation & Training
Grant Proposal Writing, Editing, Feedback & Review	Program Capacity
Leadership Development	Program Development
Meeting Facilitation	Train the Trainer/Facilitation Skills

References:

Nicole Trimble		206-851-6710	nicolettrimble@outlook.com
Vicki Turner	Prevention Resource Center	(406) 444-3484	vturner@mt.gov

Contact:

LaNette Jones
110 S 3rd St
Livingston, MT 59047
E: lanettediaz@gmail.com
Ph: (406) 207-7682

MCMAHON CONSULTING GROUP



Cole McMahon has a lot of hats. As a former Commissioner (and commission staffer), he's obsessed with creating local solutions to local issues. As a former PD of both AmeriCorps*state and national direct programs, he's devoted to inventing, scaling and sustaining service. As a service geek and nonprofit mechanic, he just wants national service to be the most amazing item in the federal budget. As the leader of the McMahon Consulting Group, his team is always tinkering to engineer better programs and trainings. In 25 years, Cole has placed AmeriCorps members in 50 states, quadrupled the budgets of two programs, and raised over \$25M for national service programs.

Training Topics:

AmeriCorps Grant Management	Multi-Site Management
AmeriCorps Program Management	Philanthropic & Sustainable Funding Sources
Board Development & Engagement	Program Capacity
Capacity Building	Program Development
Civic Engagement	Program Evaluation
Data Collection and Instruments	Program Management & Training
Designing an Evaluation	Reporting and Using Evaluation Results
Grant Proposal Writing, Editing, Feedback & Review	State Service Plan Development
Leadership Development	Strategic Planning Site Supervisor Training
Logic Models	Train the Trainer/Facilitation Skills
Marketing & Communications	Writing an Evaluation Plan
Meeting Facilitation	

References:

Alison Paul	Montana Legal Services Association	(406) 442-9830 Ext. 115	apaul@mtlsa.org
Kim Anderson	Humanities Montana	(406) 243-6022	Kim.Anderson@mso.umt.edu

Contact:

Cole McMahon
5 Melvin Ave
Catonsville, MD 21228
E: mcmahonconsultinggroup@verizon.net
Ph: (410) 504-9005



MONTANA NATURAL HISTORY CENTER



Montana Natural History Center

Connecting People with Nature

Christine Morris is a Certified Interpretive Guide Trainer with the National Association of Interpretation. She can train individuals to use interpretive techniques in museum and field settings. She has experience training volunteers and staff in program development and educational leadership at the Montana Natural History Center, as well as, educated AmeriCorps members in Montana natural history.

Training Topics:

Program Development	
---------------------	--

References:

Lisa Bickell	Montana Natural History Center	(406) 327-0405	lbickell@montananaturalist.org
Thurston Elfstrom	Montana Natural History Center	(406) 327-0405	telfstrom@montananaturalist.org

Contact:

Christine Morris
120 Hickory St. Suite A
Missoula, MT 59801
E: cmorris@montananaturalist.org
Ph: (406) 327-0405
www.montananaturalist.org

MONTANA STATE UNIVERSITY EXTENSION



Deborah is a Program Coordinator with MSU Extension Service who travels locally, state-wide, nationally, and internationally to deliver training in intergenerational relationships, self-care, leadership, economic/tourism development, conflict management, program development, diversity and inclusion, and many other topics. She has produced evidence-based, and peer-reviewed publications.

Training Topics:

Capacity Building	Program Development
Civic Engagement	Program Management & Training
Diversity & Disability Inclusion	Resource Development
Leadership Development	Strategic Planning
Marketing & Communications	Train the Trainer/Facilitation Skills
Meeting Facilitation	

References:

Paul Lachapelle	Montana State University, Political Science & Extension	(406) 994-3620	paul.lachapelle@montana.edu
Jackie Rumph	MSU Extension	(406) 256-2828	jackie.rumph@montana.edu



Contact:

Deborah Albin
303 Taylor Hall
Bozeman, MT 59717
E: deborah.albin@montana.edu
Ph: (406) 994-1907

MSU POLITICAL SCIENCE & EXTENSION/COMMUNITY DEVELOPMENT



Paul travels locally, state-wide, nationally, and internationally to deliver training in economic/tourism development, board leadership, conflict management, program development and evaluation, climate change, rural development, diversity and inclusion, and many other topics. He produces evidence-based, peer-reviewed publications. He is currently a professor at Montana State University and Community Development Specialist with MSU Extension Service.

Training Topics:

Board Development & Engagement	Program Capacity
Capacity Building	Program Development
Civic Engagement	Program Evaluation
Diversity & Disability Inclusion	Program Management & Training
Leadership Development	Public Policy/Advocacy Education
Member Development	Resource Development
Member Orientation & Training	Strategic Planning
Member Recruitment & Retention	Train the Trainer/Facilitation Skills
Performance/Impact Measurement	

References:

Liz Shanahan	Montana State University, Political Science	(406) 994-5167	shanahan@montana.edu
Franke Wilmer	Montana State University, Political Science	(406) 994-4141	franke@montana.edu



Contact:

Paul Lachapelle
2117 Wilson Hall
Bozeman, MT 59717
E: paul.lachapelle@montana.edu
Ph: (406) 994-3620

NDH CONSULTING



Nina's background is in philanthropy and business and program development for nonprofits. She campaigned for large nonprofits in Texas and Montana, such as the Cystic Fibrosis Foundation in Dallas, Texas. Her Montana roots brought her back to Billings after she and her husband adopted their first child. She worked as the Executive Director for the American Heart Association, as the Marketing and Development Director for Youth Dynamics, and now as a consultant, serving people and nonprofits who want to take the next step, take flight or celebrate their resiliency.

Training Topics:

Capacity Building	Philanthropic & Sustainable Funding Sources
Civic Engagement	Program Capacity
Designing an Evaluation	Program Development
Grant Proposal Writing, Editing, Feedback & Review	Program Evaluation
Leadership Development	Program Evaluation Budget
Marketing & Communications	Program Management & Training
Meeting Facilitation	Strategic Planning
Multi-Site Management	Volunteer Management
Performance/Impact Measurement	

References:

Mary Hernandez	Invisage Consulting	(406) 690-2967	mary@invisageconsulting.com
Ryan Duffy	Anderson Zurmuehlen	(406) 371-6672	rduffy@azworld.com



Contact:

Nina Hernandez
940 North 31 Street
Billings, MT 59101
E: nina@ndhconsulting.org
Ph: (406) 371-6677

ON 3 LEARN



The three managing partners who make up On3Learn have over 50 years experience in AmeriCorps as members, program directors, state commission staff, and consultants. At On3Learn, we develop on-demand courses for AmeriCorps Staff, Site Supervisors, and Members.

Training Topics:

AmeriCorps Fiscal Management	Member Recruitment & Retention
AmeriCorps Grant Management	Multi-Site Management
AmeriCorps Program Management	Performance/Impact Measurement
Data Collection and Instruments	Program Capacity
Grant Proposal Writing, Editing, Feedback & Review	Program Development
Logic Models	Program Management & Training
Member Development	Site Supervisor Training
Member Orientation & Training	Theory of Change

References:

Melinda Points	Oklahoma AmeriCorps	(405) 858-7278	mpoints@okamericorps.com
Kathy Gattinger	VolunteerAR	(501) 320-3961	Kathy.Gattinger@adhe.edu

Contact:

Amy Salinas
5106 Suburban Drive
Austin, TX 78745
E: info@on3learn.com
Ph: (414) 988-3314
www.on3learn.com

PAMELA G. POON, PLLC



Since 1997, Pamela has provided mediation, mediation training, peer mediation training, facilitation, conflict management to Montana volunteers, state agencies, non-profits and churches including US Postal Service, BLM, Rocky Boy's Reservation, MT Fish, Wildlife and Parks, Montana State University, MT Department of Justice, MT Supreme Court, Bozeman Community Mediation Center, Missoula Center for Dispute Resolution, Bozeman High and Middle Schools, MT State University Hilleman Scholars, Big Sky Youth Empowerment, Bozeman Methodist Church, and Bozeman Unitarian Universalist Fellowship.

Training Topics:

Board Development & Engagement	Meeting Facilitation
Leadership Development	Train the Trainer/Facilitation Skills

References:

Julie Burk	MT Supreme Court	(406) 841-2957	jburk3@mt.gov
Dustin Temple	MT Fish Wildlife & Parks	(406) 444-0358	dtemple@mt.gov

Contact:

Pamela Poon
PO Box 665
9455 Big Gulch Drive
Bozeman, MT 59771
E: pam@middlegroundssolutions.com
Ph: (406) 539-2474
www.middlegroundssolutions.com

PLUCK!



Stacey Otterstrom is a certified life coach who opened PLuck! Coaching to work with individuals, entrepreneurs and organizations across the country and right here in Helena, Montana, as they manage their worlds, careers and find amazing SUCCESS in life, business and their communities! With her MPA and background in politics, she has a unique ability to bridge public impact and business savvy, while focused on strategic and tangible steps you can take TODAY, supporting teams and individuals in the holistic way necessary to see incredible results no matter what your goals. She has worked at the highest levels of government and with over 200 state-based boards, councils and commissions and their staff on recruitment, retention, best practices and so much more. She has also hosted, consulted and facilitated large events, training and conferences. Check out the website for more information and don't be shy for a custom package for your organization.

Training Topics:

Board Development & Engagement	Member Orientation & Training
Civic Engagement	Member Recruitment & Retention
Diversity & Disability Inclusion	Strategic Planning
Leadership Development	Train the Trainer/Facilitation Skills
Meeting Facilitation	Volunteer Management
Member Development	

References:

Reagen Lozar	Self-employed	(406) 599-0707	reagenlozar@gmail.com
Onawa Linden	Oaklin Creative	(406) 439-0824	onawa@oaklincreative.com

Contact:

Stacey Otterstrom
130 Neill Ave
Helena, MT 59601
E: Stacey@pluckcoaching.com
Ph: (406) 945-1487
www.pluckcoaching.com
Facebook: @PLuckcoaching
Instagram: pluckcoaching
LinkedIn: Stacey Otterstrom



RACINE ENTERPRISES, LLC

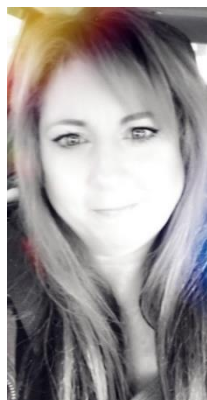
Monitor site productivity and optimize procedures for cost reduction. Consistently meets and exceeds goals; Maximize time and efficiencies by developing processes for sites; Extensive budget analysis, budget monitoring, effectively control costs, develop budgets, cost controls, financial analysis, forecasting, cash; Experienced grant reviewer – Chairperson for reviewing grants for United States Department of Agriculture, Administration for Native Americans and reviewed grants for USDA and Community Economic Development. Extensive background in preparing, writing, and submitting grant proposals. We have worked with tribal communities over the past 13 years restoring, supporting, and developing Native community food systems, assisting in the developing of small business opportunities through the community gardens, and orchards with Native communities; assisted in the promotion of traditional wellness development, co-op development, and assisting in creating greener food system developments on reservation communities throughout Montana. Supports local vision while incorporating culture and traditional values. We build community relationships through various methods because community relationships are the most important communication activity undertaken by an organization and are often overlooked. We strive to build those important relationships in everything we do.

Training Topics:

Board Development & Engagement	Program Development
Capacity Building	Program Evaluation
Data Collection and Instruments	Program Evaluation Budget
Designing an Evaluation	Program Management & Training
Developing Research Questions	Reporting and Using Evaluation Results
Grant Proposal Writing, Editing, Feedback & Review	Strategic Planning
Leadership Development	Volunteer Management
Performance/Impact Measurement	Writing an Evaluation Plan
Program Capacity	

References:

Vanessa McNeil	Montana Social Scientists	(406) 214-0029	vanessa176@hotmail.com
Sonya Bigleggins	Rocky Mountain Tribal Leaders	(406) 650-6241	sonya.bigleggins@rmtlc.org



Contact:

Mitzi Marie Racine
6905 Lake Shore Drive, 16
Billings, MT 59106
E: mitziracine68@gmail.com
Ph: (406) 690-9546

REACH HIGHER MONTANA



Reach Higher Montana helps students strategically pursue educational opportunities by: increasing the capacity of local communities to support more students pursuing education after high school; increased student participation in activities that connect them to education paths after high school; and increased capacity and efficacy of the state-level provider network.

Headquartered in Helena, Reach Higher Montana's advisors provide outreach services to rural schools in Southeast Montana, Southwest Montana, Western Montana, North Central Montana, and Northwest Montana. Reach Higher Montana advisors have completed Facilitator of Career Development training and earned Career Services Provider certification through the National Career Development Association.

Reach Higher Montana offers targeted programming and financial assistance for youth in foster care to prepare and pursue education after high school. In addition, Reach Higher Montana is a resource for scholarship funds and information for all students. All services are provided at no cost to schools, students, or families.

Training Topics:

Marketing & Communications	Public Policy/Advocacy Education
Meeting Facilitation	Resource Development
Multi-Site Management	Service-Learning
Program Development	

References:

Kristin Tessman	American Jobs for America's Youth - MT	(406) 207-8727	ktessman@americanjobs4youth.org
Erin Shaw	Montana College Access Network	(406) 360-9781	mtcollegeaccess@gmail.com

Contact:

Kelly Cresswell
40 West 6th Avenue
Helena, MT 59601
E: kcresswell@reachhighermontana.org
Ph: (406) 422-1275 ext. 804
www.reachhighermontana.org

THE SERVICE NERD

TRAY DEADWYLER



Tray Deadwyler, CVM, CLC, CBC, leads The Service Nerd, a collective of consultancies and nonprofit organization supporting you as a leader, your team, and organization live and lead differently. *Think for Good* supports you and your organization increase your efficacy through creative ideation, planning, and implementation. *The CompleMentor* is a life and leadership coaching firm focusing the personal and professional priorities that accelerates your growth. *The C4 Group* strengthens faith-based entities to become the epicenter of local communities utilizing the Virtue model and CARE (Collaboration, Assess, Research, Evaluate) strategy to influence positive-change within culture and society. Tray has more than 17 years of service within the nonprofit sector with the majority of his tenure (14 years) supporting the national service movement and maintains credentials in volunteer management (CVM), life coaching (CLC), and cognitive behavioral coaching (CBC).

Training Topics:

AmeriCorps Fiscal Management	Member Orientation & Training
AmeriCorps Grant Management	Member Recruitment & Retention
AmeriCorps Program Management	Multi-Site Management
Board Development & Engagement	Philanthropic & Sustainable Funding Sources
Capacity Building	Program Capacity
Civic Engagement	Program Development
Data Collection and Instruments	Program Evaluation
Grant Proposal Writing, Editing, Feedback & Review	Program Management & Training
Grantmaking	Resource Development
Leadership Development	State Service Plan Development
Life After AmeriCorps	Strategic Planning
Logic Models	Site Supervisor Training
Meeting Facilitation	Theory of Change
Member Development	Train the Trainer/Facilitation Skills

References:

Kimberly Brown	Virginia State Service Commission	(804) 726-7069	kimberly.brown@dss.virginia.gov
Ryan Volk	North Dakota Service Commission	701-328-6048	rdvolk@nd.gov

Contact:

Tray T.S. Deadwyler, CVM, CLC, CBC

E: tray@theservicenerd.com

Ph: (404) 530-9315

www.theservicenerd.com



SERVICE YEAR ALLIANCE



Service Year Alliance is a nonprofit dedicated to making a service year a common expectation and opportunity for all young Americans. They partner with organizations both inside and outside the service year field in several ways. They give support to programs and state commissions in developing and implementing best practices to improve AmeriCorps members recruitment and retention. They increase collaboration across programs, create communities of practice, and strengthen the connections between service year programs and their community. Our marketing and communications team boasts expertise in storytelling, video production, data, graphic design, media placement, and social media, and can develop targeted,

data-driven awareness building and recruitment campaigns. Their experienced staff helps policymakers and advocates develop policy strategies to advance a national service agenda at the state or local level.

Training Topics:

Diversity & Disability Inclusion	Member Recruitment & Retention
Grant Proposal Writing, Editing, Feedback & Review	Program Capacity
Leadership Development	Program Development
Life After AmeriCorps	Program Management & Training
Logic Models	Public Policy/Advocacy Education
Marketing & Communications	State Service Plan Development
Meeting Facilitation	Strategic Planning
Member Development	Theory of Change
Member Orientation & Training	

References:

Adam Lounsbury	Volunteer Iowa	(515) 725-3099	adam.lounsbury@iowaeda.com
Maureen Eccleston	PennSERVE	(717) 772-4428	meccleston@pa.gov

Contact:

Kristen Bennett

1400 I ST NW, Suite 900

Washington, DC 20005

E: support@serviceyear.org

Ph: (202) 734-7133

www.serviceyearalliance.org

THOMAS P. MILLER & ASSOCIATES



THOMAS P. MILLER & ASSOCIATES

Thomas P. Miller & Associates (TPMA) is a national evaluation consulting firm and has experience conducting AmeriCorps Program evaluations and they have worked with AmeriCorps programs, State Service Commissions, and America's Service Commission to build capacity for data collection, performance measurement, evaluation, and building the evidence base. Through this work, TPMA provided tailored

trainings and coaching sessions in-person and virtually. TPMA has been working with Serve Indiana for two years to provide technical and training assistance to AmeriCorps programs through group and one-on-one coaching sessions. To assist Serve Indiana with assessing needs for additional T/TA, TPMA developed an organizational capacity tool focused on all aspects of AmeriCorps grant implementation. TPMA has also worked with California Volunteers and America's Service Commission on training and train-the-trainer sessions. TPMA has a variety of additional experience working with state agencies, nonprofits, institutions of education (PreK thru University). TPMA has a passion for making evaluation and data useful for organizations and for helping AmeriCorps programs continue to build their capacity and capabilities with data and evaluation.

Training Topics:

Data Collection and Instruments	Performance/Impact Measurement
Designing an Evaluation	Program Development
Developing Research Questions	Program Evaluation
Evidence Base	Program Evaluation Budget
Grant Proposal Writing, Editing, Feedback & Review	Reporting and Using Evaluation Results
Logic Models	Theory of Change
Meeting Facilitation	Writing an Evaluation Plan

References:

Carol Overly	Pennsylvania Mountain Service Corps	(814) 472-7690	coverly@iu08.org
Tara Baltzley	California Volunteers	(916) 319-8443	tara.baltzley@cv.ca.gov

Contact:

Aimee Wilkinson
1630 N Meridian Street, Suite 430
Indianapolis, IN 46202
E: awilkinson@tpma-inc.com
Ph: (740) 262-5674
www.tpma-inc.com

UNIVERSITY OF MONTANA



Laurie conducts Campus Compact trainings focused on An Integrated Framework for Exiting Community Partnerships; Decolonizing Approaches to Community Engagement: Lessons from Indigenous Perspectives; Community Assessment; and Inclusive Discussions and Trainings: Lessons from Indigenous Perspectives.

Training Topics:

Capacity Building	Diversity & Disability Inclusion
Civic Engagement	Life After AmeriCorps
Data Collection and Instruments	Meeting Facilitation
Designing an Evaluation	Member Orientation & Training
Developing Research Questions	Program Evaluation

References:

Josh Vanek	University of Montana	(406) 243-5175	vanek@mtcompact.org
Andrea Vernon	Montana Campus Compact	(406)243-5159	Andrea.Vernon@mso.umt.edu

Contact:

Laurie A. Walker
31 CAMPUS DR, 004 Jeannette Rankin Hall
UM – School of Social Work
Missoula, MT 59801
E: laurie.walker@umontana.edu
Ph: (406) 243-2803

VERVE EXCHANGE



Shannon completed two terms of service as an AmeriCorps *VISTA and went on to serve as the Statewide Training Officer for the Governor's Office of Community Service. Prior to launching Verve Exchange, she served as a Program Manager for Montana Campus Compact and invested eight years working with Montana Conservation Corps, earning the

title of Director of Programs. In 2015, after nearly 10 years of consulting on the side, Shannon launched Verve Exchange and now focuses on delivering high-impact learning experiences full-time. Her efforts under Verve Exchange have earned several accolades, including being named as one of Bozeman's Top 20 Under 40, an award reserved for southwest Montana's top young business professionals.

Training Topics:

AmeriCorps Program Management	Program Capacity
Board Development & Engagement	Program Development
Capacity Building	Program Evaluation
Civic Engagement	Program Management & Training
Leadership Development	Service Enterprise Training/Consulting
Life After AmeriCorps	Service-Learning
Logic Models	State Service Plan Development
Meeting Facilitation	Strategic Planning
Member Development	Site Supervisor Training
Member Orientation & Training	Theory of Change
Member Recruitment & Retention	Train the Trainer/Facilitation Skills
Multi-Site Management	Volunteer Management
Performance/Impact Measurement	

References:

Sarah Sadowski	Governor's Office of Community Service	(406) 444-5547	SSadowski@mt.gov
Kate O'Neill	Montana Conservation Corps	(406) 587-4475	kate@mtcorps.org

Contact:

Shannon Stober
 42 Timberline Creek Road
 Bozeman, MT 59715
 E: shannon@verveexchange.com
 Ph: (406) 439-4436
www.theverveexchange.com



VolunteerPro | TOBI JOHNSON & ASSOCIATES



Tobi Johnson is an internationally sought after expert and master trainer with over 25 years direct, boots-on-the-ground experience in nonprofit and public sector organizations. She is known for her modern thought leadership, highly practical evidence-based strategies, and innovative, “big hat” thinking around volunteerism and service. For the past decade Tobi’s firm, Tobi Johnson & Associates, has helped countless organizations evaluate their current volunteer strategy, develop performance metrics, and boost the impact of their programming. Tobi’s inspiring, no-nonsense

coaching, and consulting will help you transform dreams into realities (and build robust team buy-in along the way!). In 2015, she launched VolunteerPro, an extensive online capacity building and training hub for leaders of volunteers. If you are seeking a keynote, workshop, webinar, or training series, look no further. The VolunteerPro library has over 60 masterclasses. Tobi will help you choose a topic and format that your audience will love.

Training Topics:

Capacity Building	Member Recruitment & Retention
Data Collection and Instruments	Performance/Impact Measurement
Designing an Evaluation	Program Evaluation
Developing Research Questions	Reporting and Using Evaluation Results
Logic Models	Strategic Planning
Marketing & Communications	Theory of Change
Member Development	Train the Trainer/Facilitation Skills
Member Orientation & Training	Volunteer Management

References:

Rebecca Verhoff-Kiss	ServeOhio	(614) 995-5269	Rebecca.Verhoff-Kiss@serveohio.gov
Maryalice Crofton	Maine Commission for Community Service	(207) 624-7792	Maryalice.Crofton@maine.gov

Contact:

Tobi Johnson
PO Box 23408
Knoxville, TN 37933
E: tobi@volpro.net
Ph: (206) 799-9038
www.volpro.net

VQ VOLUNTEER STRATEGIES



VQ Volunteer Strategies is a leading provider of high-impact volunteer engagement solutions designed to help organizations raise their *VQ* – or *volunteer quotient*. Volunteer Quotient is an organization’s ability to leverage volunteer talent to increase its impact – in other words, its ability to achieve **smarter impact**. As President, Beth Steinhorn, partners with organizations and their leadership to increase their impact through strategic and innovative engagement. The author of multiple books and articles on strategic volunteer engagement, she is a popular speaker and trainer, known for her interactive and inspiring presentations. Beth regularly participates in the national dialogue about volunteerism and engagement. Her consultations have included developing engagement strategies for Save the Children USA, Special Olympics Southern California, Best Friends Animal Society, and Repair the World.

Prior to becoming a consultant, Beth worked as an executive director and marketing director with education and faith-based organizations and spent years working with museums as an educator, manager, and anthropologist. She draws upon her anthropology experience still, helping organizations through the culture shift process – from viewing volunteer management as a program to embracing engagement as a strategy to fulfill mission

Training Topics:

Service Enterprise Training/Consulting	Volunteer Management
--	----------------------

References:

Pat Guerrero	Best Friends Animal Society	435-644-2001	PatG@bestfriends.org
Kristy Judd	Spark the Change Colorado	(303) 282-1234	Kjudd@sparkthechangecolorado.org

Contact:

Beth Steinhorn
16748 East Smoky Hill Road, #198
Centennial, CO 80015
E: Beth@VQStrategies.com
Ph: (303) 669-6418
www.vqstrategies.com



WORDCRAFT, LLC



WordCraft, LLC

Arts. Evaluation. Grantwriting.

Becky is actively involved in training with the AmeriCorps programs in Iowa, Kansas, and New Mexico. Her work has been on behalf of both the state commissions and individual programs. She has provided in-person, online training, and individualized coaching on a variety of topics related to program evaluation. She has presented at ASC Regional Conference for the last four years.

Training Topics:

Data Collection and Instruments	Program Evaluation
Designing an Evaluation	Reporting and Using Evaluation Results
Developing Research Questions	Strategic Planning
Evidence Base	Theory of Change
Grant Proposal Writing, Editing, Feedback & Review	Writing an Evaluation Plan
Logic Models	

References:

Samuel Sokolove	New Mexico Commission on Community Volunteerism	(505) 841-8474	samuel.sokolove@state.nm.us
Chad Driscoll	Iowa Commission on Volunteer Service	(800) 308-5987	chad.driscoll@iowaEDA.com

Contact:

Becky Eason
400 Jane CT
Lawrence, KS 66049
E: becky.eason@wordcraftks.com
Ph: (785) 218-7655



YARROW HOUSE

Curtis Smeby has 25 years of experience working with graduate students, local, regional, and state agencies; tribal communities providing high-quality learning experiences in the topics identified. As a lifelong learner, it is exciting to provide creative and evidence-based workshops making a difference to community entities. Most recently our local efforts to increase awareness of trauma and develop resilience strategies for communities has been most rewarding and engaging. Learning is a social activity that makes a difference in all communities.

Training Topics:

Capacity Building	Member Development
Civic Engagement	Member Orientation & Training
Developing Research Questions	Program Development
Grant Proposal Writing, Editing, Feedback & Review	Program Evaluation
Leadership Development	Theory of Change
Logic Models	Train the Trainer/Facilitation Skills
Meeting Facilitation	

References:

Dr. Fred Smiley	Retired Professor	262-960-0154	fsmiley1sf@gmail.com
Dr. Janet Trethewey	Retired Professor	406-265-8023	treth@mtintouch.net

Contact:

Curtis Smeby
1342 Boulevard Avenue
Havre, MT 59501
E: smebyc@msun.edu
Ph: (406) 390-3471

Appendix

TOPIC CHART	MONTANA RESOURCES	OUT OF STATE RESOURCES
AMERICORPS FISCAL, GRANT and/or PROGRAM MANAGEMENT	Verve Exchange	Aligned Impact Consulting Amy Salinas Do Good, Be Good Jefts Consulting The Grantsmanship Center McMahon Consulting Group, LLC On3Learn, LLC The Service Nerd
BOARD DEVELOPMENT & ENGAGEMENT	Buffalo Creek Consulting EmpowerMT Halliday & Associates LaNette Jones MSU Political Science & Extension/Community Development NDH Consulting Pamela G. Poon, PLLC PLuck! Coaching Racine Enterprises, LLC Verve Exchange	KS Solutions, LLC The Service Nerd
CAPACITY BUILDING	Buffalo Creek Consulting Halliday & Associates Hart of Montana Consulting, Inc. LaNette Jones Montana State University Extension MSU Political Science & Extension/Community Development NDH Consulting Racine Enterprises, LLC University of Montana Verve Exchange Yarrow House	Amy Salinas The Grantsmanship Center KS Solutions, LLC McMahon Consulting Group, LLC The Service Nerd VolunteerPro
CIVIC ENGAGEMENT	EagleChild Consulting & Enforcement Services Halliday & Associates Montana State University Extension MSU Political Science & Extension/Community Development NDH Consulting PLuck! Coaching University of Montana Verve Exchange Yarrow House	Aligned Impact Consulting Amy Salinas Jefts Consulting McMahon Consulting Group, LLC The Service Nerd
DATA COLLECTION & INSTRUMENTS	Hart of Montana Consulting, Inc. Racine Enterprises, LLC University of Montana	Amy Salinas Bee's Knees Consulting LLC McMahon Consulting Group, LLC On3Learn, LLC

		The Service Nerd Thomas P. Miller & Associates VolunteerPro Wordcraft, LLC
DESIGNING AN EVALUATION	Buffalo Creek Consulting NDH Consulting Racine Enterprises, LLC University of Montana	Bee's Knees Consulting LLC The Grantsmanship Center McMahon Consulting Group, LLC Thomas P. Miller & Associates VolunteerPro Wordcraft, LLC
DEVELOPING RESEARCH QUESTIONS	Hart of Montana Consulting, Inc. Racine Enterprises, LLC University of Montana Yarrow House	Bee's Knees Consulting LLC Thomas P. Miller & Associates VolunteerPro Wordcraft, LLC
DISASTER SERVICES	EagleChild Consulting & Enforcement Services	Aligned Impact Consulting
DIVERSITY & DISABILITY INCLUSION	EmpowerMT Montana State University Extension MSU Political Science & Extension/Community Development PLuck! Coaching University of Montana	Aligned Impact Consulting Amy Salinas Jefts Consulting Service Year Alliance
EVIDENCE BASE		Bee's Knees Consulting LLC
GRANTMAKING, GRANT PROPOSAL WRITING, EDITING, FEEDBACK & REVIEW	EagleChild Consulting & Enforcement Services Halliday & Associates Hart of Montana Consulting, Inc. LaNette Jones Montana State University Extension NDH Consulting Racine Enterprises, LLC Yarrow House	Aligned Impact Consulting Amy Salinas Jefts Consulting The Grantsmanship Center McMahon Consulting Group, LLC On3Learn, LLC Service Year Alliance The Service Nerd Thomas P. Miller & Associates Wordcraft, LLC
LEADERSHIP DEVELOPMENT	Buffalo Creek Consulting Elkins Consulting Inc. EmpowerMT MSU Political Science & Extension/Community Development Pamela G. Poon, PLLC PLuck! Coaching Racine Enterprises, LLC Verve Exchange Yarrow House	Aligned Impact Consulting Amy Salinas Do Good, Be Good KS Solutions, LLC McMahon Consulting Group, LLC Service Year Alliance The Service Nerd
LIFE AFTER AMERICORPS	Elkins Consulting Inc. Hart of Montana Consulting, Inc. University of Montana Verve Exchange	Aligned Impact Consulting Amy Salinas Do Good, Be Good Jefts Consulting KS Solutions, LLC Service Year Alliance The Service Nerd
LOGIC MODELS	Hart of Montana Consulting, Inc Verve Exchange	Aligned Impact Consulting Amy Salinas

	Yarrow House	Bee's Knees Consulting LLC The Grantsmanship Center McMahon Consulting Group, LLC On3Learn, LLC Service Year Alliance The Service Nerd Thomas P. Miller & Associates VolunteerPro
MARKETING & COMMUNICATION	Montana State University Extension NDH Consulting Reach Higher Montana	Aligned Impact Consulting McMahon Consulting Group, LLC Service Year Alliance VolunteerPro
MEMBER DEVELOPMENT	Buffalo Creek Consulting EagleChild Consulting & Enforcement Services EmpowerMT LaNette Jones MSU Political Science & Extension/Community Development PLucK! Coaching Verve Exchange Yarrow House	Aligned Impact Consulting Amy Salinas Do Good, Be Good Jefts Consulting KS Solutions, LLC On3Learn, LLC Service Year Alliance The Service Nerd VolunteerPro
MEETING FACILITATION	Buffalo Creek Consulting Elkins Consulting Inc. EmpowerMT Halliday & Associates LaNette Jones Montana State University Extension NDH Consulting Pamela G. Poon, PLLC PLucK! Coaching Reach Higher Montana University of Montana Verve Exchange Yarrow House	Aligned Impact Consulting Amy Salinas Do Good, Be Good KS Solutions, LLC McMahon Consulting Group, LLC Service Year Alliance The Service Nerd Thomas P. Miller & Associates
MEMBER ORIENTATION & TRAINING	Buffalo Creek Consulting EagleChild Consulting & Enforcement Services EmpowerMT LaNette Jones MSU Political Science & Extension/Community Development PLucK! Coaching University of Montana Verve Exchange Yarrow House	Aligned Impact Consulting Amy Salinas Do Good, Be Good Jefts Consulting KS Solutions, LLC On3Learn, LLC Service Year Alliance The Service Nerd VolunteerPro
MEMBER RECRUITMENT & RETENTION	Buffalo Creek Consulting EagleChild Consulting & Enforcement Services MSU Political Science & Extension/Community Development PLucK! Coaching	Aligned Impact Consulting Amy Salinas Do Good, Be Good Jefts Consulting KS Solutions, LLC On3Learn, LLC

	Verve Exchange	Service Year Alliance The Service Nerd VolunteerPro
MULTI-SITE MANAGEMENT	EagleChild Consulting & Enforcement Services NDH Consulting Reach Higher Montana Verve Exchange	Aligned Impact Consulting Amy Salinas Do Good, Be Good Jefts Consulting KS Solutions, LLC McMahon Consulting Group, LLC On3Learn, LLC The Service Nerd
NATIONAL SERVICE CRIMINAL HISTORY CHECKS	EagleChild Consulting & Enforcement Services	Aligned Impact Consulting On3Learn, LLC
PERFORMANCE/IMPACT MEASUREMENT	MSU Political Science & Extension/Community Development NDH Consulting Racine Enterprises, LLC Verve Exchange	Amy Salinas Bee's Knees Consulting LLC Jefts Consulting On3Learn, LLC Thomas P. Miller & Associates VolunteerPro
PHILANTHROPIC & SUSTAINABLE FUNDING SOURCES	NDH Consulting Chany Reon Ockert Consulting LLC	The Grantsmanship Center McMahon Consulting Group, LLC The Service Nerd
PROGRAM CAPACITY	LaNette Jones MSU Political Science & Extension/Community Development NDH Consulting Racine Enterprises, LLC Verve Exchange	On3Learn, LLC Service Year Alliance The Service Nerd
PROGRAM DEVELOPMENT	Buffalo Creek Consulting Halliday & Associates Hart of Montana Consulting, Inc. LaNette Jones Montana State University Extension MSU Political Science & Extension/Community Development NDH Consulting Racine Enterprises, LLC Reach Higher Montana Verve Exchange Yarrow House	Aligned Impact Consulting Amy Salinas Jefts Consulting The Grantsmanship Center KS Solutions, LLC McMahon Consulting Group, LLC On3Learn, LLC Service Year Alliance The Service Nerd Thomas P. Miller & Associates
PROGRAM EVALUATION	Hart of Montana Consulting, Inc. NDH Consulting Racine Enterprises, LLC University of Montana Verve Exchange Yarrow House	Bee's Knees Consulting LLC The Grantsmanship Center McMahon Consulting Group, LLC The Service Nerd Thomas P. Miller & Associates VolunteerPro Wordcraft, LLC
PROGRAM EVALUATION BUDGET	Racine Enterprises, LLC	The Grantsmanship Center Thomas P. Miller & Associates
PROGRAM MANAGEMENT & TRAINING	EagleChild Consulting & Enforcement Services EmpowerMT	Amy Salinas Do Good, Be Good Jefts Consulting

	Hart of Montana Consulting, Inc. Montana State University Extension MSU Political Science & Extension/Community Development NDH Consulting Racine Enterprises, LLC Verve Exchange	The Grantsmanship Center KS Solutions, LLC McMahon Consulting Group, LLC On3Learn, LLC Service Year Alliance The Service Nerd
PUBLIC POLICY/ADVOCACY EDUCATION	Halliday & Associates MSU Political Science & Extension/Community Development Reach Higher Montana	Service Year Alliance
REPORTING AND USING EVALUATION RESULTS	Hart of Montana Consulting, Inc. Racine Enterprises, LLC	Bee's Knees Consulting LLC The Grantsmanship Center McMahon Consulting Group, LLC Thomas P. Miller & Associates VolunteerPro Wordcraft, LLC
RESOURCE DEVELOPMENT	Montana State University Extension MSU Political Science & Extension/Community Development Chany Reon Ockert Consulting LLC Reach Higher Montana	The Service Nerd
SERVICE ENTERPRISE TRAINING/CONSULTING	EagleChild Consulting & Enforcement Services School District #28 Educational Consultant Verve Exchange	VQ Volunteer Strategies
SERVICE-LEARNING	Reach Higher Montana	
SITE SUPERVISOR TRAINING	EagleChild Consulting & Enforcement Services Verve Exchange	Amy Salinas Do Good, Be Good Jefts Consulting McMahon Consulting Group, LLC On3Learn, LLC The Service Nerd
STATE SERVICE COMMISSION OPERATIONS	Verve Exchange	Aligned Impact Consulting McMahon Consulting Group, LLC Service Year Alliance
STATE SERVICE PLAN DEVELOPMENT		The Service Nerd
STRATEGIC PLANNING	Buffalo Creek Consulting EmpowerMT Halliday & Associates Hart of Montana Consulting, Inc. Montana State University Extension MSU Political Science & Extension/Community Development NDH Consulting PLuck! Coaching Racine Enterprises, LLC Jason Sargent, Educational Consultant	Amy Salinas Do Good, Be Good KS Solutions, LLC McMahon Consulting Group, LLC The Service Nerd VolunteerPro Wordcraft, LLC
THEORY OF CHANGE	Buffalo Creek Consulting Verve Exchange	Aligned Impact Consulting Amy Salinas

	Yarrow House	Bee's Knees Consulting LLC The Grantsmanship Center On3Learn, LLC Service Year Alliance The Service Nerd Thomas P. Miller & Associates VolunteerPro Wordcraft, LLC
TRAIN THE TRAINER/ FACILITATION SKILLS	Buffalo Creek Consulting EagleChild Consulting & Enforcement Services EmpowerMT Halliday & Associates LaNette Jones Montana State University Extension MSU Political Science & Extension/Community Development Pamela G. Poon, PLLC PLucK! Coaching Verve Exchange Yarrow House	Aligned Impact Consulting Amy Salinas Do Good, Be Good KS Solutions, LLC McMahon Consulting Group, LLC The Service Nerd VolunteerPro
VOLUNTEER MANAGEMENT	EagleChild Consulting & Enforcement Services NDH Consulting Racine Enterprises, LLC Verve Exchange	Do Good, Be Good KS Solutions, LLC VolunteerPro
WRITING AN EVALUATION PLAN	EagleChild Consulting & Enforcement Services Hart of Montana Consulting, Inc. Racine Enterprises, LLC	Bee's Knees Consulting LLC The Grantsmanship Center McMahon Consulting Group, LLC Thomas P. Miller & Associates Wordcraft, LLC

Other Topics	
7 Cups connects you to caring listeners for free emotional support	7 Cups
Career Development Facilitation, Scholarship Search and Application Best Practices, College and Career Advocacy	Reach Higher Montana
Certified Interpretive Guide Training	Montana Natural History Center
Certified Professional Coach	PLucK! Coaching
Climate Change	MSU Political Science & Extension/Community Development
Collective Impact	Halliday & Associates
Commissioner Engagement	McMahon Consulting Group, LLC
Conflict Solutions and Training; Reconciliation; Workplace Mediation	EmpowerMT
Education: Positive Systems and Interventions	School District #28 Educational Consultant
Gallup Certified Strengths Finders Coaching, Keynotes	Elkins Consulting Inc.
Needs Assessments	Hart of Montana Consulting, Inc.
New Manager Training & Development – Loaned Executive	Aligned Impact Consulting

Personality Profile Based Coaching for Individuals, Teams and Larger Organizations, Team Development and Dynamics; Face5 Personality Profiles	Buffalo Creek Consulting
Professional trainings that increase current skillset as well as the opportunity to add valuable interpersonal skills	Professional Development Center (PDC)
Project Management, Events management	KS Solutions, LLC
PsychArmor® Institute provides critical resources to Americans so they can effectively engage with and better support military service members, Veterans and their families across our nation.	PsychArmor
Rules and Regulations	On3Learn, LLC
Suicide Awareness, Alertness and Intervention; Mental Health First Aid – Adult, Youth and Higher Education; Resilience Training and Development, Adverse Childhood Experiences (ACEs) Presentations; Attachment Theory Processes	Yarrow House
Training: Mediation, Peer Mediation, Conflict Management	Pamela G. Poon, PLLC
Understanding Poverty	Amy Salinas
Volunteer Recruitment, Volunteer Program Development, Change Management	VolunteerPro
Writing and Designing Custom Disaster Preparedness Plans	EagleChild Consulting & Enforcement Services

ADDITIONAL RESOURCES

7 Cups

Association of America's Service Commissions (ASC) <http://statecommissions.org>

[CNCS Citizenship Toolkits](#)

[CNCS Litmos ecourses](#)

[CNCS Superintendent's/Principal's toolkit](#)

[Constitutional Rights Foundation](#)

[CNCS National Service Knowledge Network](#)

[Community Building Institute](#)

[Montana Campus Compact](#)

[Project for Civic Reflection](#)

[PSYCHARMOR](#)

Office: 877.2HOPE4W (877.246.7349)

Email: info@hopeforthewarriors.org

ServeMontana website www.serve.mt.gov

[Service Reflection Toolkit](#)

[University of Kansas, Community Toolbox](#)



This material is based upon work of the Montana Commission on Community Service, supported by the Corporation for National and Community Service under Grant No. 16TAHMT001. Resources in this document are those of the authors and do not necessarily reflect the official position of AmeriCorps or the Corporation for National and Community Service.